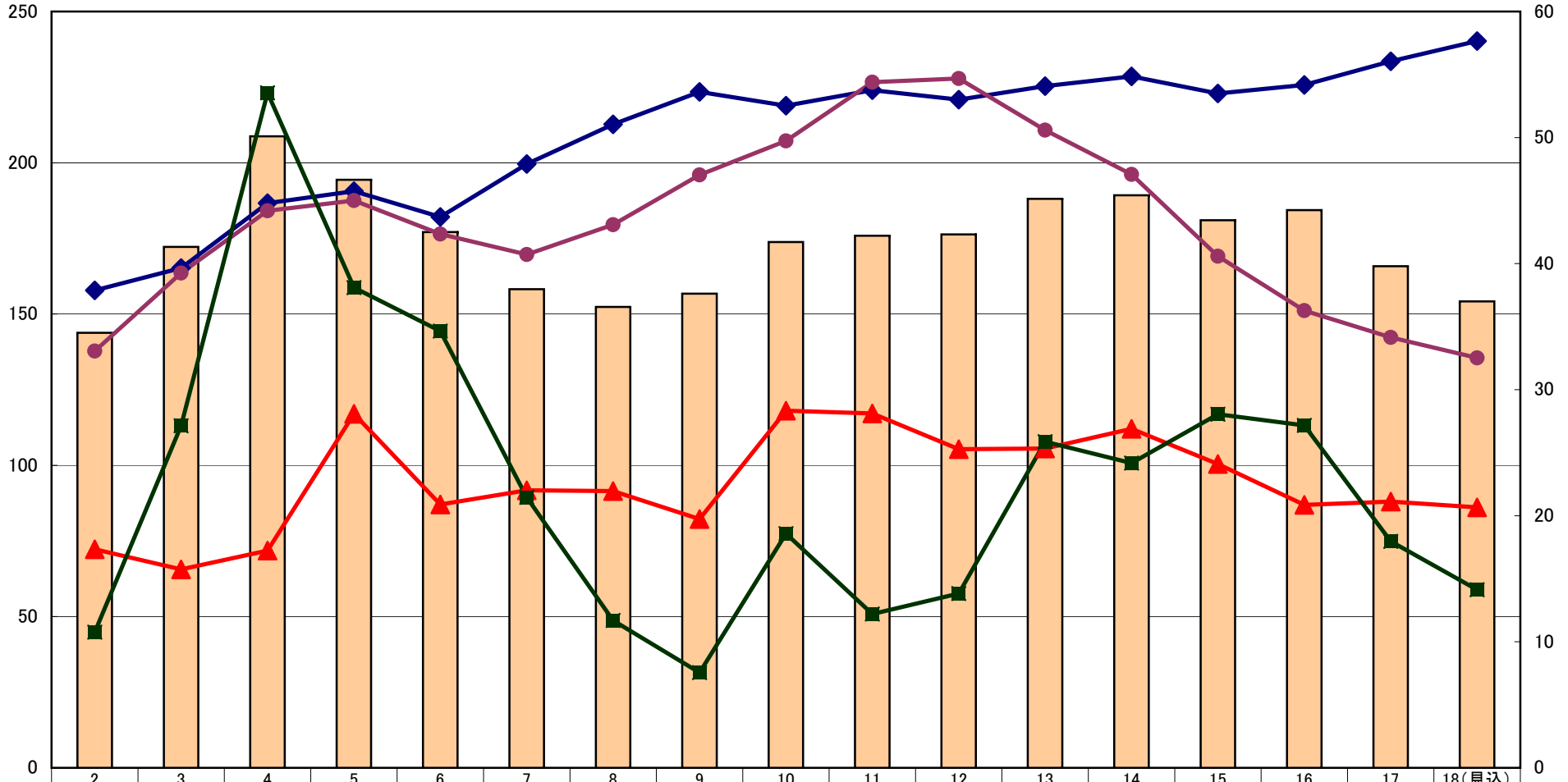


歳入総額  
(億円)

平成2年～18年財政規模の推移(一般会計:歳入)

市税・地方交付税・国県支出金・市債  
(億円)

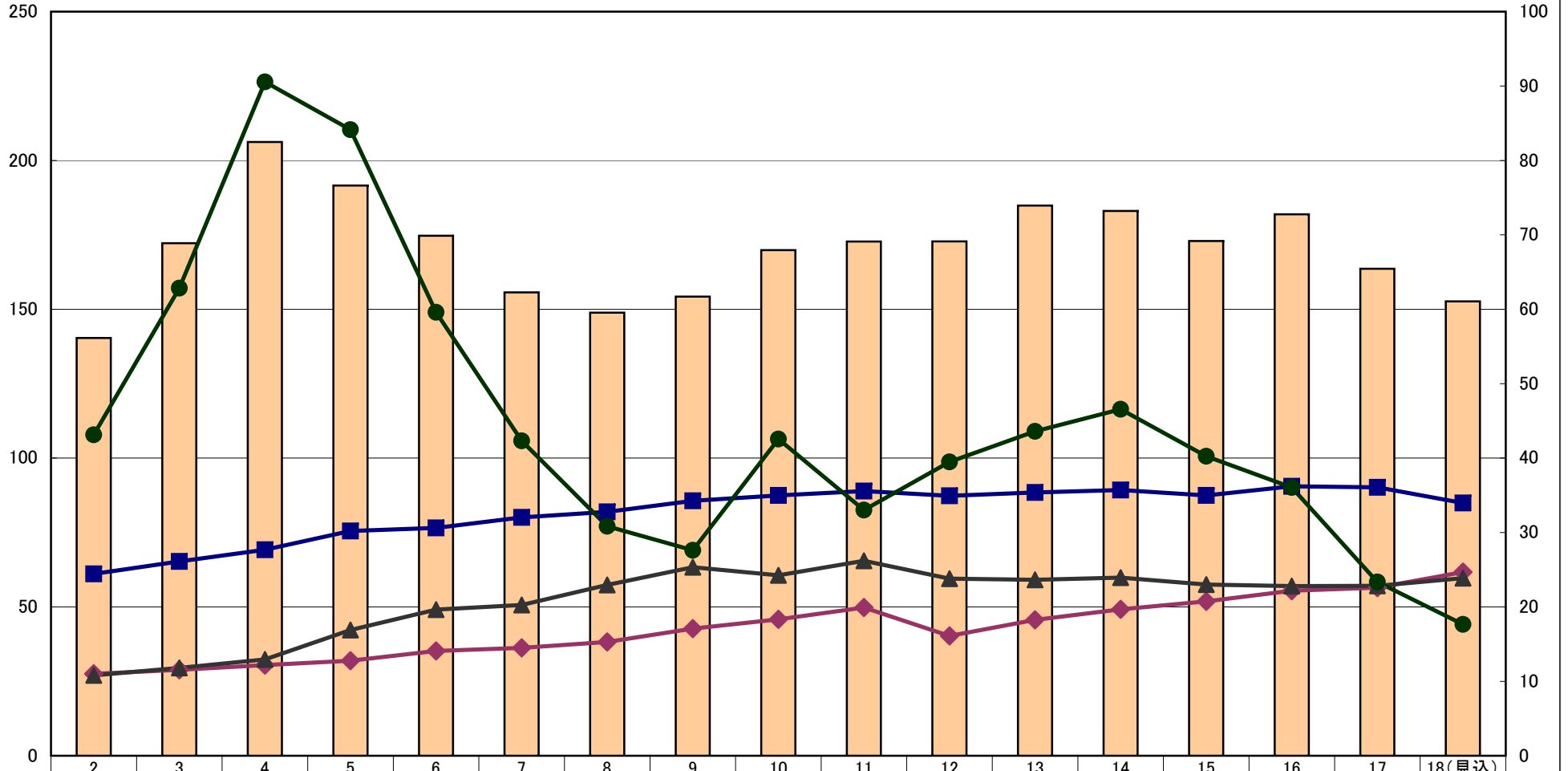


	2	3	4	5	6	7	8	9	10	11	12	13	14	15	16	17	18(見込)
歳入総額	14,380,671	17,218,867	20,876,089	19,439,542	17,708,383	15,821,866	15,233,526	15,674,997	17,381,880	17,588,446	17,631,564	18,808,158	18,925,941	18,102,563	18,437,255	16,582,822	15,418,762
市税	3,788,118	3,964,490	4,479,464	4,574,732	4,370,692	4,789,728	5,105,098	5,361,860	5,252,704	5,375,609	5,300,861	5,408,164	5,485,663	5,350,125	5,417,814	5,605,291	5,765,545
地方交付税	3,306,113	3,925,241	4,419,122	4,500,145	4,234,409	4,071,990	4,308,952	4,704,154	4,973,438	5,439,031	5,468,236	5,058,587	4,707,774	4,058,615	3,627,011	3,414,859	3,252,392
国県支出金	1,734,111	1,574,344	1,723,329	2,808,401	2,089,714	2,201,361	2,195,222	1,973,348	2,833,144	2,811,657	2,528,422	2,533,344	2,689,379	2,409,705	2,086,340	2,112,388	2,066,803
市債	1,076,710	2,713,310	5,355,240	3,809,200	3,464,400	2,145,200	1,168,800	755,800	1,858,200	1,220,100	1,382,700	2,587,000	2,417,400	2,805,500	2,716,800	1,796,900	1,412,500

歳出総額  
(億円)

平成2年～18年財政規模の推移(一般会計:歳出)

人件費・扶助費・公債費・投資的経費  
(億円)



	2	3	4	5	6	7	8	9	10	11	12	13	14	15	16	17	18(見込)
歳出総額	14,034,577	17,218,867	20,620,211	19,156,866	17,469,828	15,566,315	14,885,490	15,425,339	16,985,428	17,275,759	17,279,051	18,485,522	18,304,402	17,295,524	18,192,896	16,360,527	15,265,358
人件費	2,444,108	2,610,803	2,769,179	3,020,120	3,062,553	3,202,666	3,277,834	3,425,583	3,499,183	3,556,933	3,493,996	3,538,369	3,571,728	3,498,976	3,621,517	3,606,872	3,397,000
扶助費	1,101,285	1,155,117	1,218,167	1,276,725	1,408,197	1,450,450	1,528,378	1,708,725	1,832,637	1,992,163	1,610,710	1,825,270	1,967,747	2,074,166	2,217,344	2,259,272	2,468,000
公債費	1,081,133	1,179,800	1,294,378	1,690,210	1,963,682	2,026,758	2,296,027	2,533,527	2,425,070	2,619,476	2,380,218	2,364,724	2,394,462	2,301,244	2,279,191	2,283,365	2,386,997
投資的経費	4,313,853	6,284,332	9,055,570	8,413,266	5,960,123	4,232,440	3,084,876	2,760,991	4,256,441	3,300,946	3,948,934	4,360,303	4,657,139	4,024,024	3,605,742	2,334,769	1,765,000